

PIGTRONIX

MOON POOL

User's Guide



CONTENTS

03

Introduction

04

Explanation of Controls

05

Warranty

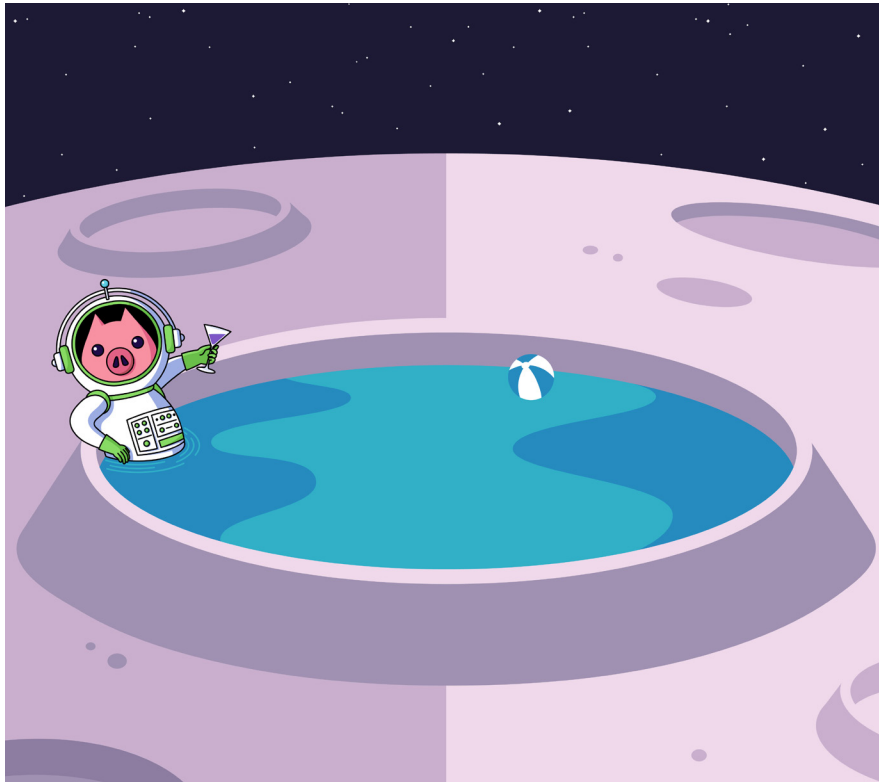
07

Contact Information

GET LOST IN THE SLOSH.

Moon Pool is an analog phase shifter and tremolo with independent speed controls featuring the ability to change the rate of one or both of the effects in either direction, corresponding to how hard you play. The 4-stage, VCA-based phaser and variable bias tremolo found in the Moon Pool can each be run as standalone effects or they can be combined in series for a mesmerizing mashup of modulators. A global Depth knob determines overall wetness, while a Sensitivity knob allows you to dial in the responsiveness of these changes to accommodate different playing styles and colors.

Runs on standard 9VDC.



EXPLANATION OF CONTROLS



- 1 Phase Speed:** Sets the rate of modulation for the phaser.
- 2 Trem Speed:** Sets the rate of modulation for the tremolo.
- 3 Depth:** Sets the intensity of both the phaser and tremolo.
- 4 Sens.:** Determines how much signal is required to change the speed of both phaser and trem when dynamics processing is turned on.

5

Trem / Phase (Switch)

- Up: The tremolo effect is engaged.
- Center: Both the phaser and tremolo effects are engaged.
- Down: The phaser effect is engaged.

6

Phaser Dyn. (Three-Way Toggle)

- Up: The rate of modulation of the phaser will increase in response to the dynamics of your playing.
- Center: The rate of modulation of the phaser does not respond to the dynamics of your playing.
- Down: The rate of modulation of the phaser will decrease in response to the dynamics of your playing.

7

Trem Dyn. (Three-Way Toggle)

- Up: The rate of modulation of the tremolo will increase in response to the dynamics of your playing.
- Center: The rate of modulation of the tremolo does not respond to the dynamics of your playing.
- Down: The rate of modulation of the tremolo will decrease in response to the dynamics of your playing.

Moon Pool requires a negative tip, 9VDC power supply.
Moon Pool does not take batteries.

PIGTRONIX LIMITED WARRANTY

Your new Pigtronix product is warranted to be free from defects in materials and workmanship for 1 year from the original date of purchase. Warranty applies only to the original retail purchaser of a registered Pigtronix product, subject to the limitations contained in this warranty.

THIS WARRANTY IS EXTENDED TO THE ORIGINAL RETAIL PURCHASER OF PIGTRONIX PRODUCTS BOUGHT ON OR AFTER JANUARY 1, 2020 ONLY AND MAY NOT BE TRANSFERRED OR ASSIGNED TO SUBSEQUENT OWNERS. IN ORDER TO VALIDATE YOUR WARRANTY, AND AS A CONDITION PRECEDENT TO WARRANTY COVERAGE HEREUNDER, YOU MUST REGISTER YOUR PRODUCT WITHIN

THIRTY (30) DAYS FOLLOWING THE ORIGINAL DATE OF PURCHASE. YOUR PROOF OF PURCHASE OR SALES RECEIPT MUST ACCOMPANY ALL REQUESTS FOR WARRANTY COVERAGE— YOU MAY SUBMIT YOUR RECEIPT ON THE REGISTRATION FORM. IF YOU DO NOT REGISTER THE PRODUCT WITHIN 30 DAYS OF PURCHASE, YOUR PRODUCT WILL NOT BE SERVICED UNDER WARRANTY.

If your product is destroyed, lost or damaged beyond repair while in the possession of Pigtronix for repair, Pigtronix will replace that product with one of the same or most similar style of a value not in excess of the original purchase price of your pedal. Any insurance covering the pedal, including but not limited to collector's value insurance, must be carried by you at your expense.

This warranty covers the cost of both labor and materials on repairs deemed necessary by our Customer Service Representative.

THIS WARRANTY DOES NOT COVER:

- Any product that has been altered or modified in any way or upon which the serial number has been tampered with or altered.
- Any product whose warranty has been altered or upon which false information has been given.
- Any product that has been damaged due to misuse, negligence, accident, or improper operation.
- The subjective issue of tonal characteristics.
- Shipping damages of any kind.
- Any product that has been subjected to extremes of humidity or temperature
- Normal wear and tear
- Any product that has been purchased from an unauthorized dealer, or upon which unauthorized repair or service has been performed.

PIGTRONIX MAKES NO OTHER EXPRESS WARRANTY OF ANY KIND WHATSOEVER. ALL IMPLIED, WARRANTIES, INCLUDING WARRANTIES OF MERCHANTABILITY AND FITNESS FOR A PARTICULAR PURPOSE, EXCEEDING THE SPECIFIC PROVISIONS OF THIS WARRANTY ARE HEREBY DISCLAIMED AND EXCLUDED FROM THIS WARRANTY. SOME STATES AND/OR COUNTRIES DO NOT ALLOW THE EXCLUSION OR LIMITATION OF IMPLIED WARRANTIES SO THAT THE ABOVE MAY NOT APPLY TO YOU. PIGTRONIX SHALL NOT BE LIABLE FOR ANY SPECIAL, INDIRECT CONSEQUENTIAL, INCIDENTAL OR OTHER SIMILAR DAMAGES SUFFERED BY THE PURCHASER OR ANY THIRD PARTY, INCLUDING, WITHOUT LIMITATION. DAMAGES FOR LOSS OF PROFITS OR BUSINESS OR DAMAGES RESULTING FROM USE OR PERFORMANCE OF THE PRODUCT, WHETHER IN CONTRACT OR IN TORT, EVEN IF PIGTRONIX OR ITS AUTHORIZED REPRESENTATIVE HAS BEEN ADVISED OF THE POSSIBILITY OF SUCH DAMAGES, AND PIGTRONIX SHALL NOT BE LIABLE FOR ANY EXPENSES, CLAIMS, OR SUITS ARISING OUT OF OR RELATING TO ANY OF THE FOREGOING.

Steps To File for Warranty Coverage:

1. Register your new guitar at <http://pigtronix.com/warranty>
2. Complete the warranty request form available at <http://pigtronix.com/support> and we will handle it from there!

CONTACT INFORMATION

Address

Bond Audio LLC
141 W 28th St, Floor 4
New York, NY, 10001

Phone

631-331-7447

Email

info@pigtronix.com

Warranty Service Email

support@pigtronix.com

Warranty Contact Form

pigtronix.com/warranty

Website

pigtronix.com

YouTube

youtube.com/pigtronix



**Product manuals are offered digitally in an attempt to be mindful of our environment.
We ask that you consider the same before printing at home. Thank you!**