

INDEX

1. Introduction to RoMI/O	4
2. Description of RoMI/O	4
3. System Requirement	5
4. Hardware Installation	6
1) Hardware Installation	6
2) Driver Installation	7
5. Setting in Applications	14
1) PC	14
Cubase SX	14
Logic	15
Sonar	16
2) MAC	17
Cubase SX	17
Nuendo	18
Reason	19

- All features and specifications subject to change for the better performance without notice.

Second Edition, APR. 2004

1. Introduction to RoMI/O

Thank you for choosing ESI Miditerminal RoMI/O.

The RoMI/O is a convenient 1 in 2 out, 32 channels USB MIDI Interface for PC and MAC computer.

With the RoMI/O you can obtain perfect MIDI timing and effective audio performance at an extremely affordable price.

- *1 In 2 Out MIDI (32 MIDI channel)*
- *Perfect MIDI timing*
- *High-speed connection to USB-equipped PC or Macintosh computers*
- *MIDI-activity indicators*
- *USB-powered; requires no external power supply*
- *Convenient Cable type*
- *Extremely compact size (83(W) x 52 (D) x28 (H)mm)*

2. Description of RoMI/O



- 1) PWR-Link : When you connect RoMI/O to the computer, this lamp will become red color.
- 2) MIDI IN: This lamp indicates the MIDI input signal. This lamp will become Yellow color.
- 3) MIDI OUT1, OUT2: If you send the MIDI signal to OUT1, the lamp will become Green color. In the case of MIDI OUT2, the lamp will become Red color. If you send the MIDI signal to both OUT1 and OUT2, the lamp will become orange color.

3. System Requirement

1) PC

Windows XP, 2000, ME

Intel Pentium III CPU or equivalent AMD CPU

Motherboard with Intel series chipsets or VIA chipsets

UDMA66/100 7200rpm hard disk drive

More than 256MB of RAM

2) MAC

MAC OS 10.1 or higher only

Macintosh with G3 or better processor (except the original PowerBook G3)

One available USB port

More than 256MB of RAM

*** Caution**

- 1. We don't recommend using many USB devices with the RoMI/O via USB hub at the same time. It may cause Input data lose.**
- 2. Some old mainboard that using OHCI (open host controller interface) may cause problem.**
- 3. Check our web site <http://www.esi-pro.com> occasionally for the most recent update information or technical issues.**

4. Hardware Installation

1) Hardware Installation

Before you begin, make sure you have read your computer's manual on installing USB devices. Your computer's manual should describe the precautions you should take.

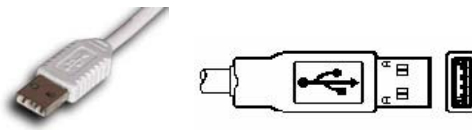
Shutting down computer wouldn't need for installing an USB device to the computer. However, we will take it from the start to make sure you can follow every detail of installation.

1. Find the USB port on your computer. USB port is looked like below. You can find it by the PS/2 or serial ports on the back of desktop computer system.



USB port on computer

2. Plug in appropriate USB plug of RoMI/O to the USB port of computer.



Turn on the computer.

You will see the LED displays of RoMI/O are lit.

The RoMI/O get the power from the computer via USB cable so you don't need to attach any external power supplier.

2) Exclusive Driver Installation

1. Windows XP/2003

Just plug the USB device, and Insert ESI installation CD into your CD-Rom drive.

Go to ESI folder -> RoMI/O folder

And run Romio.exe.

2. Windows 2000/ME

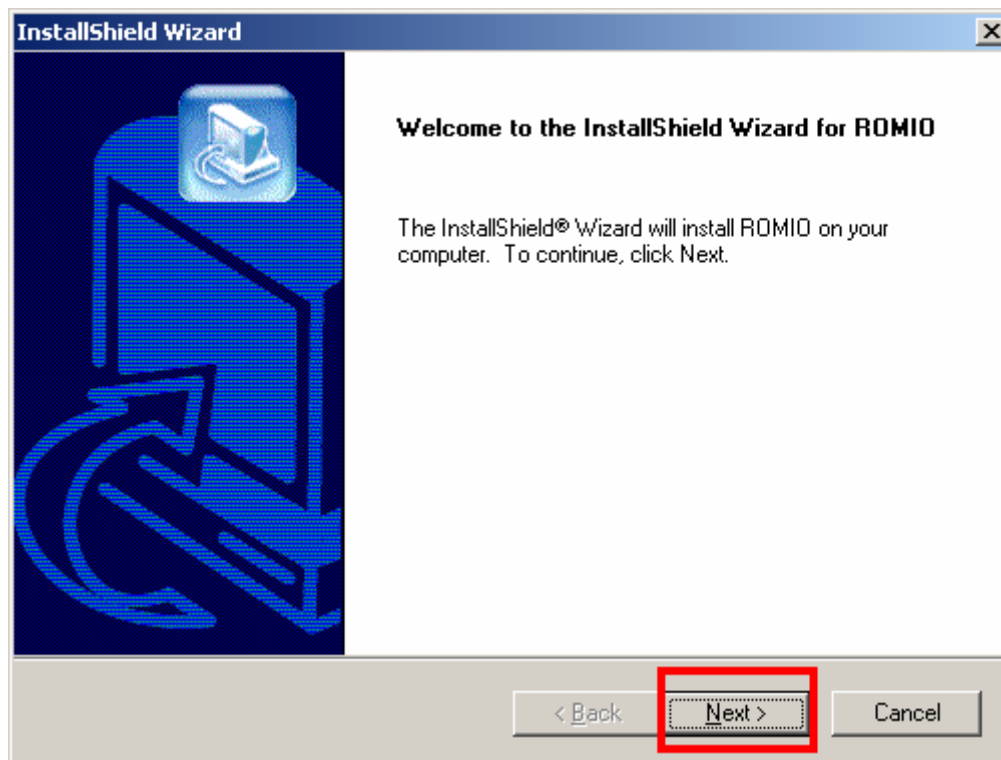
Don't plug the USB device before install the driver.

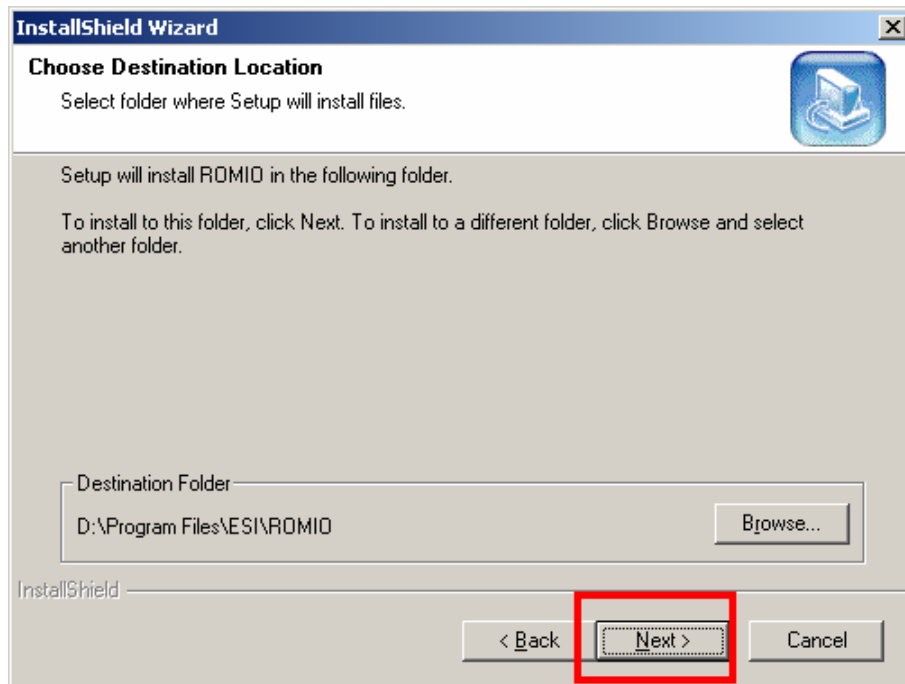
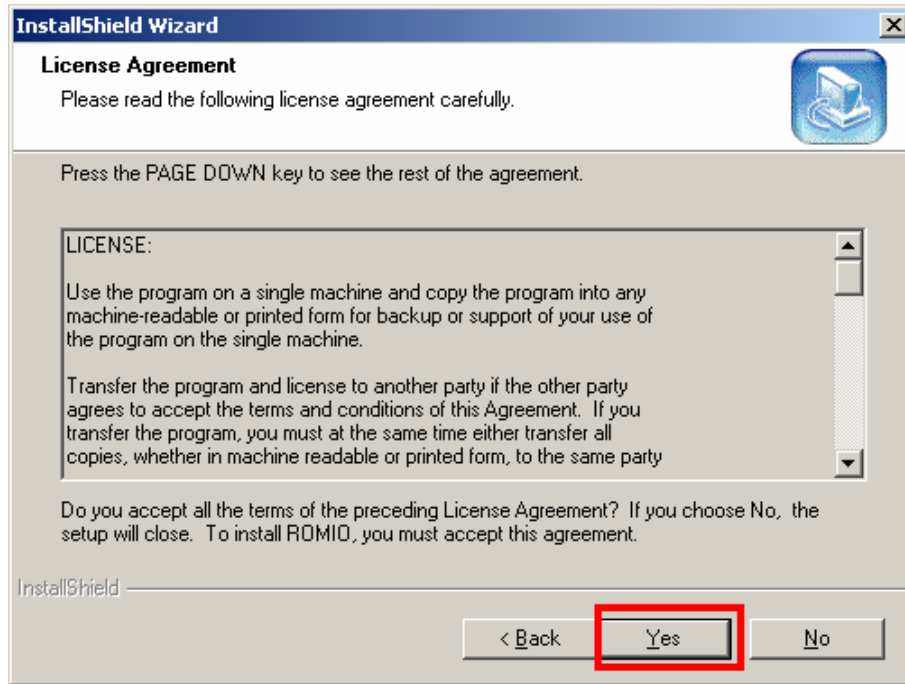
Otherwise, your system will be automatically rebooted.

1) Unplug the USB device from your system.

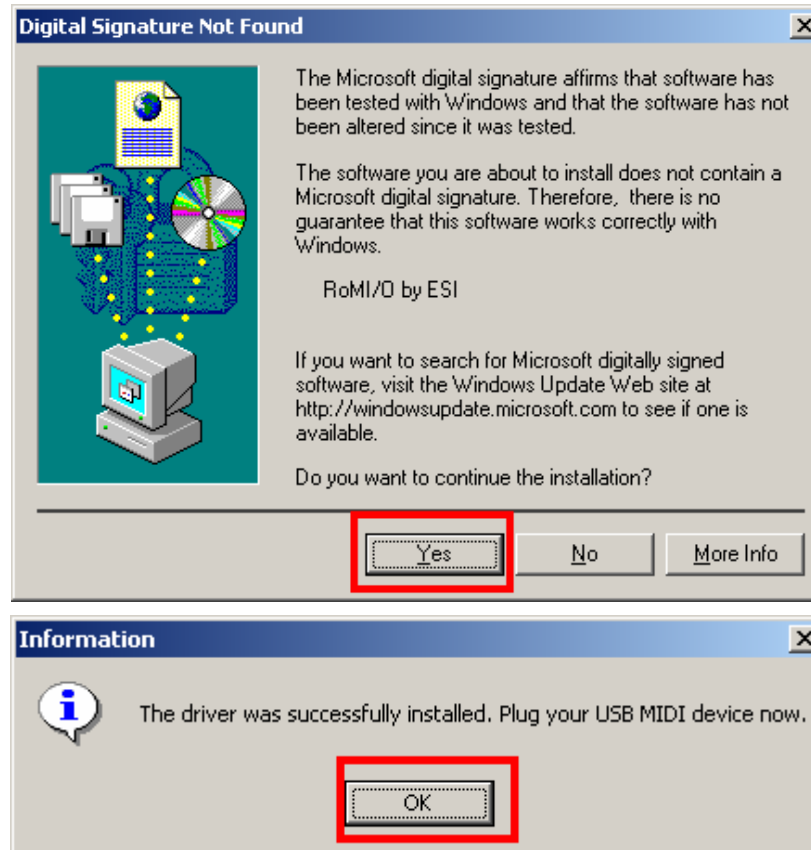
2) Run Romio.exe from your ESI Installation CD.

And click 'Yes' follow the instruction.

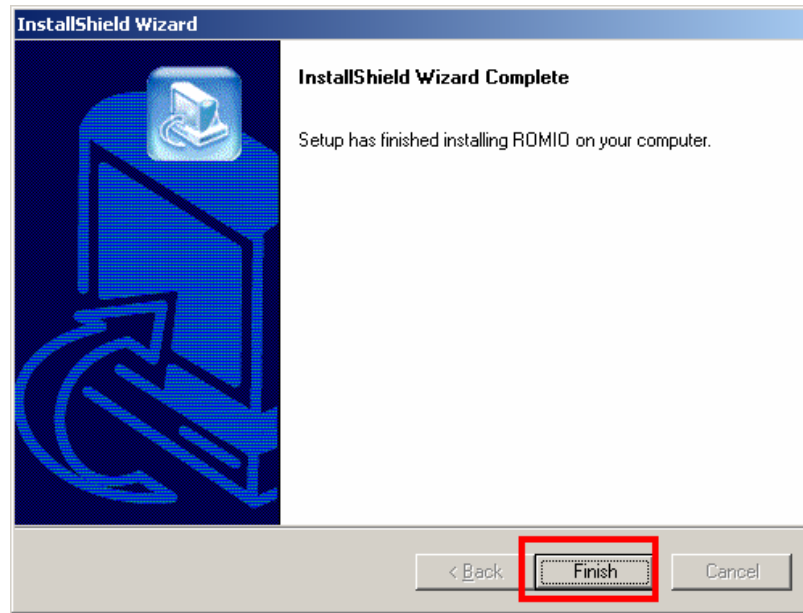




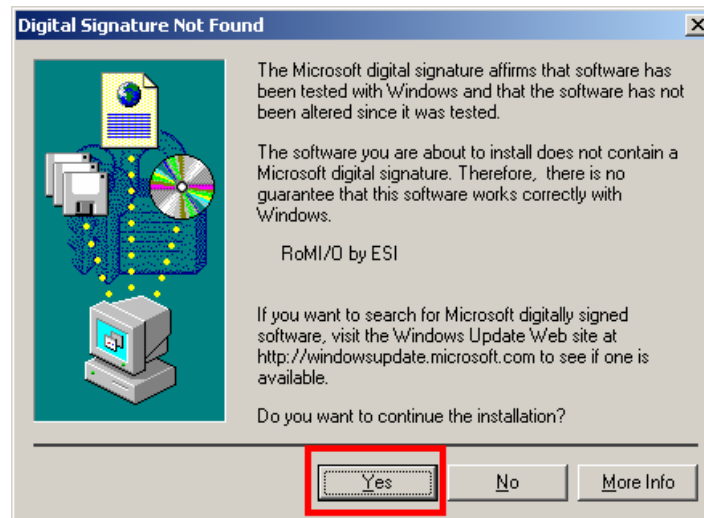
With Windows 2000 and XP installations, a message might appear stating “The software has not passed Windows Logo testing to verify its compatibility with Windows XP.” Though the message appeared, the driver is completely tested and verified by ESI and is safe to use. You can ignore the message and just click ‘Yes’.



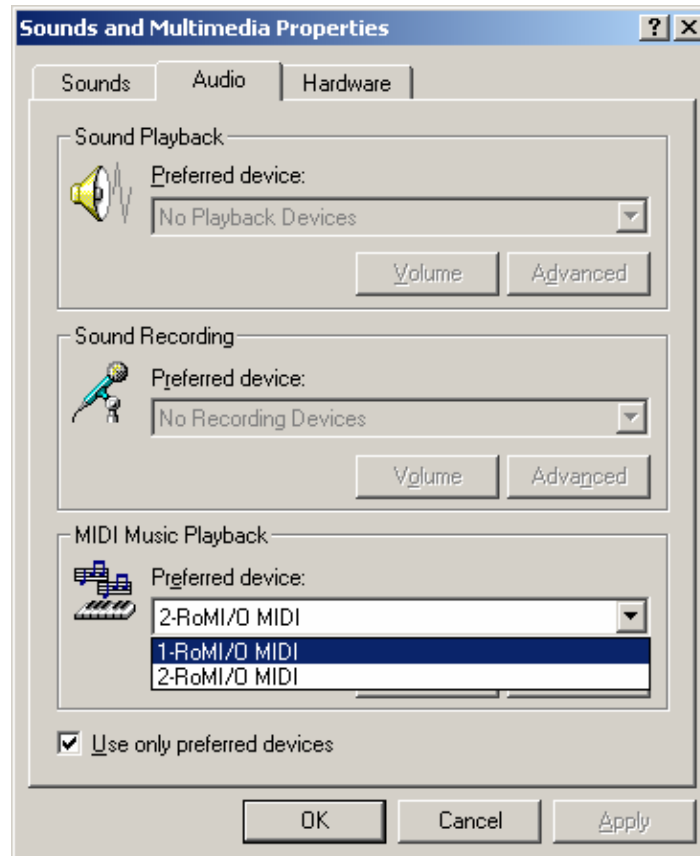
3) After finishing the driver installation, plug the USB device to your computer.



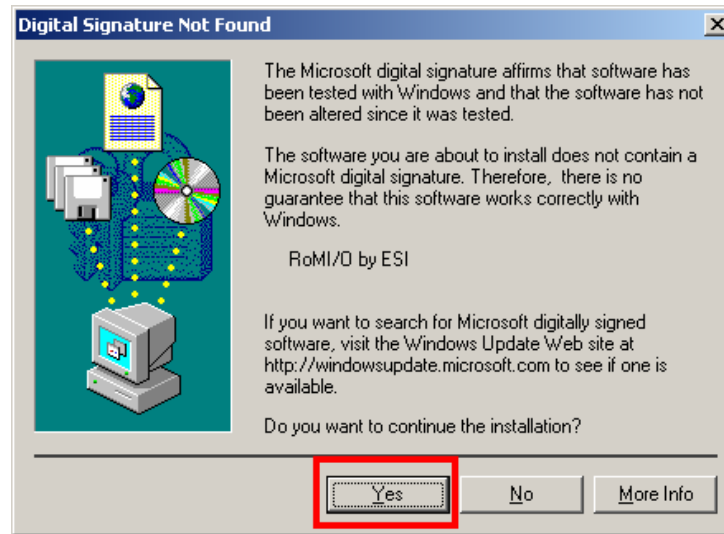
In the case of Windows 2000, you may see this message again. Simply ignore the message and just click 'Yes'.



4) Go to 'My computer-> Console -> Sounds and multimedia Properties -> MIDI tab. Select RoMI/O as your playback device.

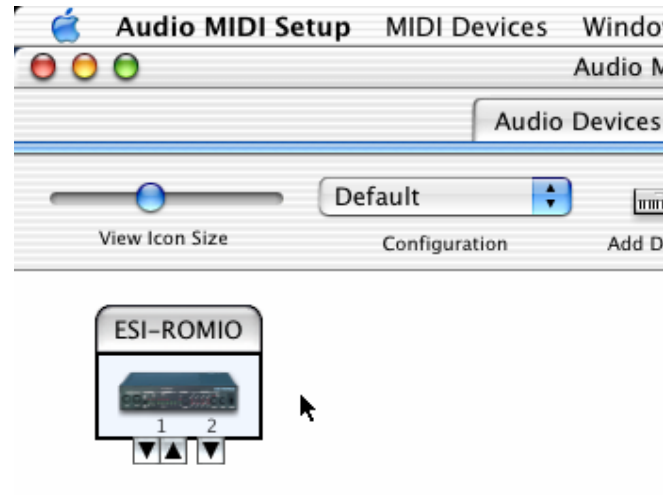


* In some case of Windows 2000, after rebooting your computer, you may find the following message again.
Just ignore and click 'Yes'.



3. MAC OS X

In Mac OS 10.1 (Jaguar) or later, you can check if your RoMI/O is recognized properly by using Audio MIDI Setup application in Applications/Utilities folder. Launch the Audio MIDI Setup application and click the MIDI Devices tab on the Audio MIDI Setup window. If the RoMI/O is recognized properly, the ESI-RoMI/O icon will be appeared on the window.



5. Setting in Applications

* This chapter only contains the basic setup for some of the software. For more detailed information, please refer to the manual of the software.

1) PC

Cubase SX

In Cubase, set input and output as RoMI/O MIDI.

See red circle of below picture.



Logic

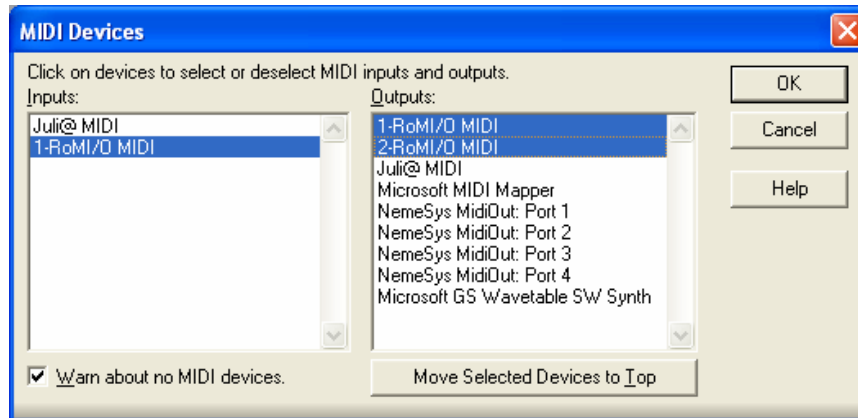
In Logic, you can choose a port for a MIDI track in the instrument parameter box in Arrange Window.

In addition, go to 'Synchronization' -> 'MIDI' and uncheck 'Transmit MIDI clock' for better performance.



Sonar

After launching Sonar, Go to Option -> MIDI devices setting and Select RoMI/O MIDI.



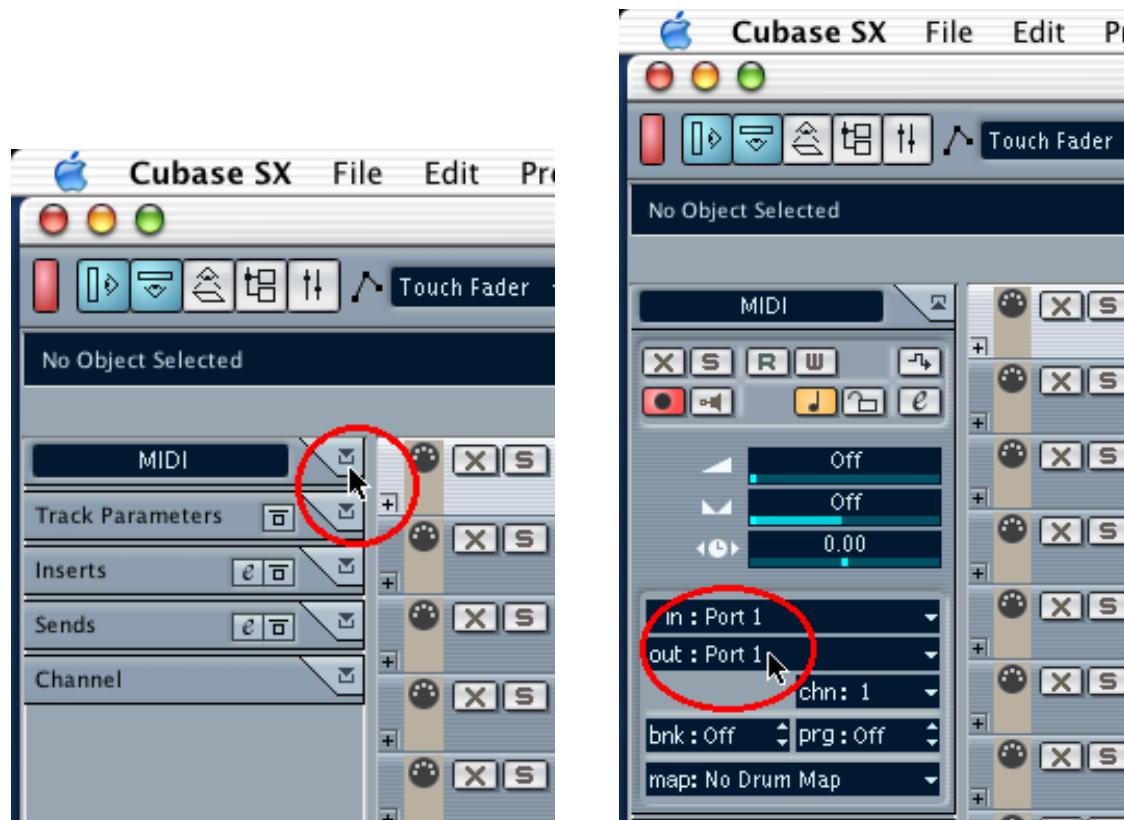
2) MAC

As long as the RoMI/O is recognized by Mac OS X with no problem, all the applications that support CoreMIDI should work fine with the RoMI/O. Here are some examples of how to change application settings for using the RoMI/O.

Cubase SX

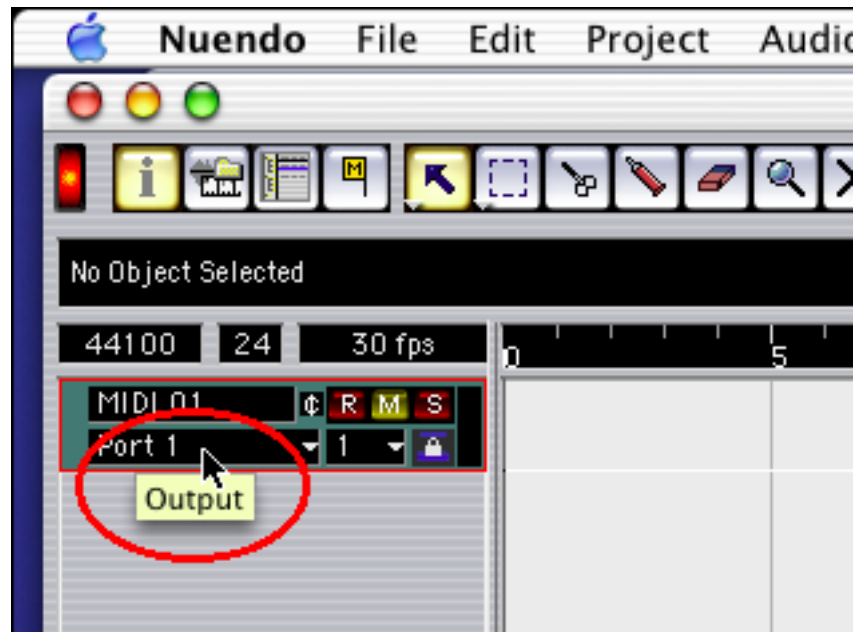
In Cubase, expand the MIDI section in the Inspector by clicking its tab.

In this section, you can choose a port for MIDI input.



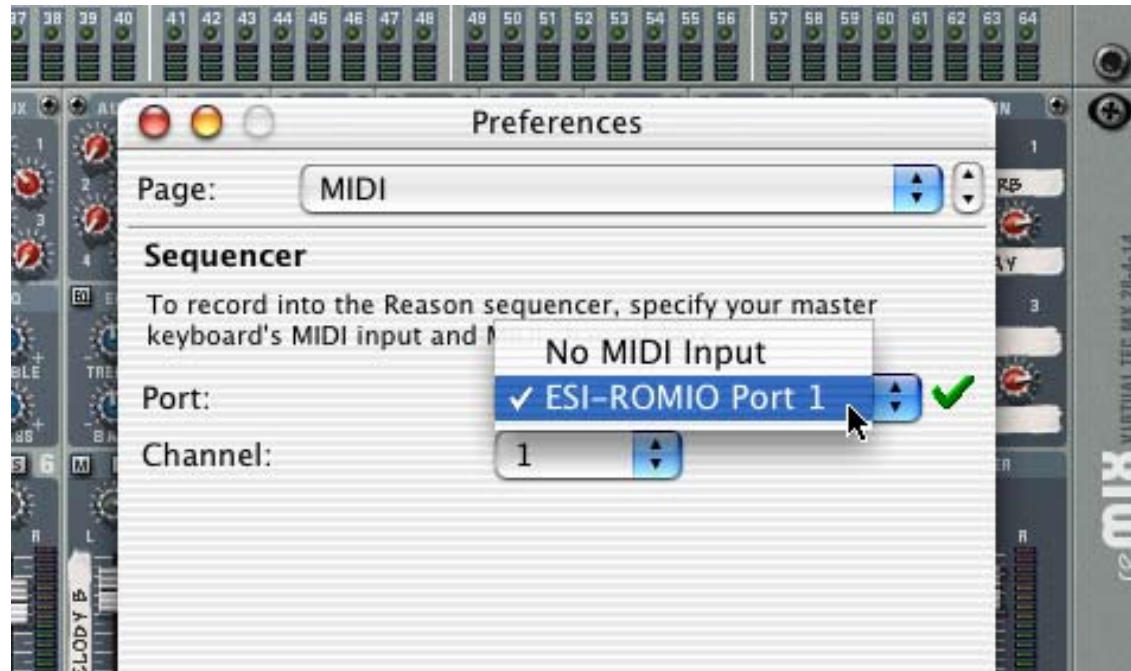
Nuendo

In Nuendo, you can choose a port for a MIDI track in the Track List area.



Reason

In Reason, open the Preferences window and you can choose a port for MIDI input in the MIDI Page.



*** Parts of this manual are continually being updated. Please check our web site www.esi-pro.com occasionally for the most recent update information.**