



## THANK YOU FOR PURCHASING THE EBS BILLY SHEEHAN ULTIMATE SIGNATURE DRIVE PEDAL

*Thank you for purchasing the Billy Sheehan Ultimate Signature Drive!*

*The 'Ultimate' version has inherited all the features from the Deluxe version (including the possibility to swap the drive chip without the need of soldering). But the palette of sounds you can create is expanded by the new Hi or Lo frequency filter that gives the Tone control a much wider range.*

Visit [EBSSWEDEN.COM](http://EBSSWEDEN.COM)  
for info on all EBS effects,  
amps and accessories.



## THE CONTROLS

DRIVE



TONE



LEVEL



CLEAN



### FREQ



### COMP



### PHASE



**DRIVE** sets the gain for the classic overdrive engine, all from subtle to high gain tone.

---

**TONE** fine tunes the desired frequency scoop, ranging from lower to higher midrange.

---

**LEVEL** sets the level for the drive channel. Post Drive Loop and before the compressor.

---

**CLEAN** set the level for the clean channel. Post Clean Loop and before the compressor.

---

**FREQ SWITCH** moves the frequency scope of the Tone control to expand the palette of sounds possible to obtain.

---

**COMP SWITCH** controls the compressor, post loops and the channels mix point.  
**HIGH** - Maximum compression is achieved with a makeup gain of 6 dB.  
**MID** - A makeup gain of 3 dB is added in this mode. The level can be changed by a Comp trimmer inside (see adv. options).  
**OFF** - Compression is disabled.

---

**PHASE SWITCH** The **INVERTED** position retain more bottom to the sound when using the drive.



**BOOST FOOT SWITCH** boosts the Drive gain level when activated.

---

**ACTIVE FOOT SWITCH** Switches the pedal on or off.

## ADVANCED CONTROL OPTIONS (as illustrated on next page)

**REPLACEABLE OP-AMP CHIP** - The chip can be removed and replaced without need of soldering. Try a different 8-pin op-amp for a different drive character. See EBS website for recommendations.

---

**BOOST** (trimmer) - Sets the level of the boost footswitch from +3 to +10 dB

---

**THR.** (trimmer) - This control sets the threshold level for the compressor. By turning this trimmer clockwise the threshold level will be lower, i.e. the compressor will react at lower levels.

---

**COMP** (trimmer) - This control sets the amount of compression when the compression mode switch is in the MID position.

---

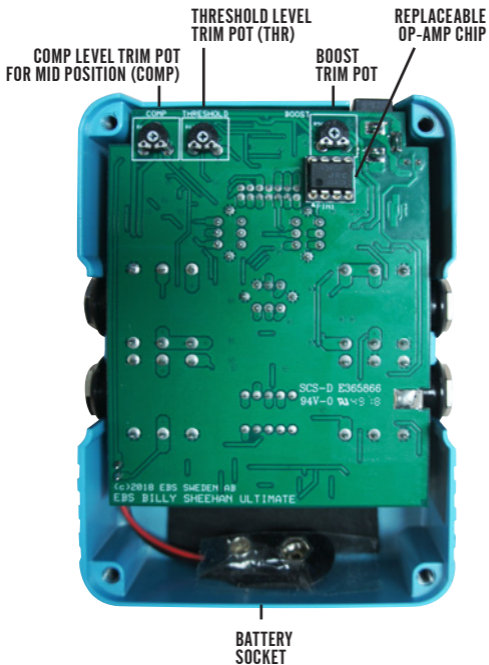
*NOTE: The factory setting for these trimmers is CENTER position.*

## POWER OPTIONS

**DC POWER ADAPTOR** We recommend the use of a DC Power Supply, such as the *EBS AD-9 Pro*. The pedal handles 9-18 V DC, and require a 2.1 mm pin center negative type of connector.

---

**BATTERY** The pedal can run on battery (not included). Use a 9V alkaline type; 6LR61.



## USING THE LOOPS

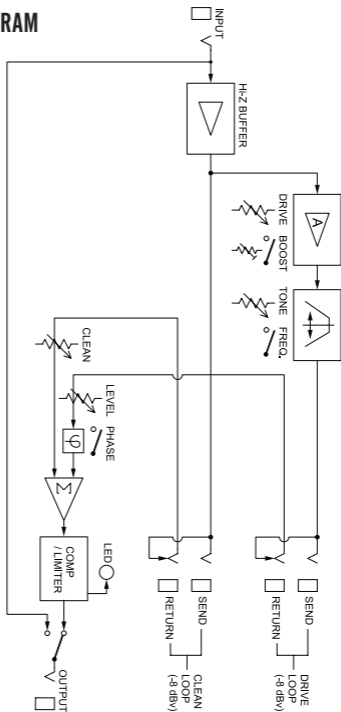


The Billy Sheehan Ultimate Signature Drive pedal gives you the option to use additional effects to affect either the Clean or Drive channel independently (the photo shows a reverb connected to the Drive Loop).

When using the loops, use an insert cable of a standard TRS type, such as the EBS ICY-30, where the RING is the SEND signal, and the TIP is the RETURN signal back to the pedal.

*Note: You may also connect a mono plug directly into the insert jacks without damaging the send output. Example: if your bass has separate outputs for low and mid/high frequencies, you can use the Clean Loop as an input for the lows and use the main input for the highs/mids.*

## BLOCK DIAGRAM



## TECHNICAL SPECIFICATIONS

Nominal Input Level	- 8 dBv
Input Impedance	700 kohms
Gain Range*	Drive 20 - 50 dB
Boost adjustable	+3- 10 dB
Tone Filter Range	175 - 8000 Hz in two ranges
Q	0.7-0.9
Output Impedance Loops	2 kohms
Input Impedance Loops	47 kohms
Mix Level Drive Channel	+3 dB max
Clean Channel	+6 dB max
Compressor Ratio	5:1 (max)
Threshold	-25 +6 dB
Attack Time (80%)	< 7 ms
Release Time (80%)	75 ms typ
Makeup gain	0, +3, +6 dB
Output Impedance	< 50 ohms
Dimensions W x H x D including all hardware	3.3" x 4.5" x 1.9" (83 x 115 x 48 mm)
Weight	420g (0.93 lb.)
Type	Analog Effect, Relay type Switching
Power Requirements	9, 12 or 18 V DC, 60 mA max. Pedal shuts off below 6.0 V

\* Depending on which drive circuit being used.

*Specifications are subject to change without notice.*

*If you did not find the answer in this manual, please contact  
EBS at [support@ebssweden.com](mailto:support@ebssweden.com)*